



17 Romney Drive, Dronfield, S18 1QQ

Saxton Mee

17 Romney Drive

£350,000

Extending to over 1500 sq ft (145.5 sq m) this greatly extended FOUR BEDROOMED and two bathroomed semi detached house has a greater floor area than many four bed detached houses, being the perfect home for a growing family.

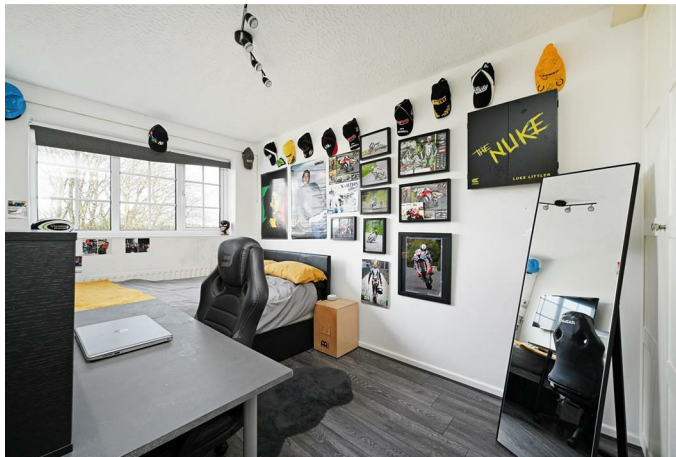
Most conveniently located close to the centre of the town and within easy reach of renowned local schooling and parks, it is essential to view this property to fully appreciate the space and versatility it offers and with gas fired central heating and double glazing, it briefly comprises: entrance lobby and hallway, utility room, study, downstairs cloakroom/WC, good size lounge, well equipped dining kitchen with useful walk in understairs store cupboard, First floor landing with outstanding master suite with built in wardrobes, dressing area and large en-suite bathroom with separate walk in shower. Two further double bedrooms, single fourth bedroom, superb family shower room.

Enclosed private rear garden with decked sitting out area, useful integral large store ideal for bikes.



- Exceptionally large family home
- Considerably extended with over 1500 sq ft of versatile accommodation
- Four Bedrooms and two bathrooms
- Outstanding master bedroom/suite
- Most convenient location
- Elevated views over the town
- Renowned local schooling
- Garage store
- EPC: C
- Tenure: Leasehold / Council Tax Band: C





17 ROMNEY DRIVE

APPROXIMATE GROSS INTERNAL AREA = 138.9 SQ M / 1496 SQ FT
 STORE = 6.6 SQ M / 71 SQ FT
 TOTAL = 145.5 SQ M / 1567 SQ FT

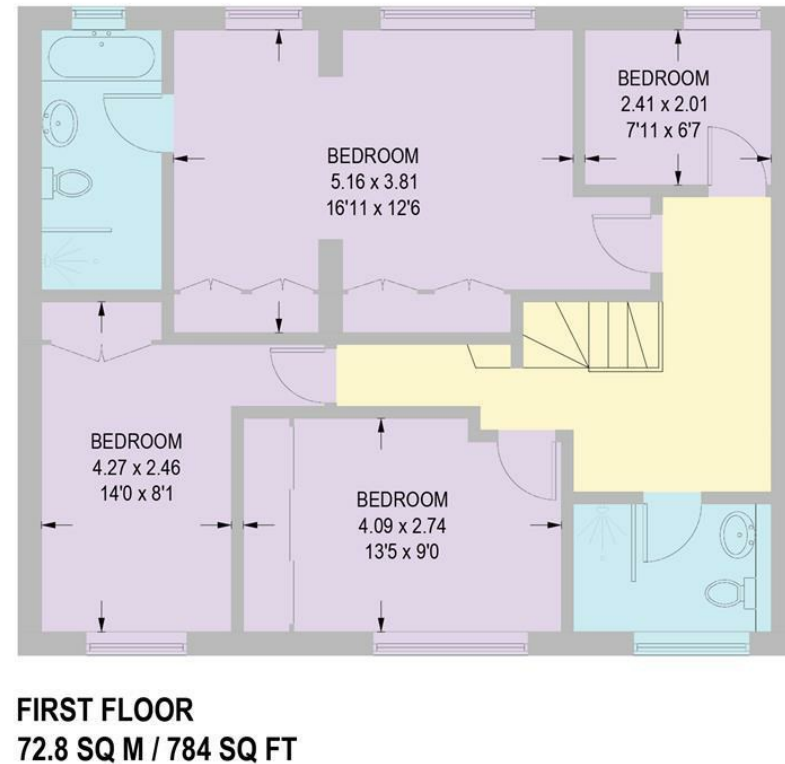
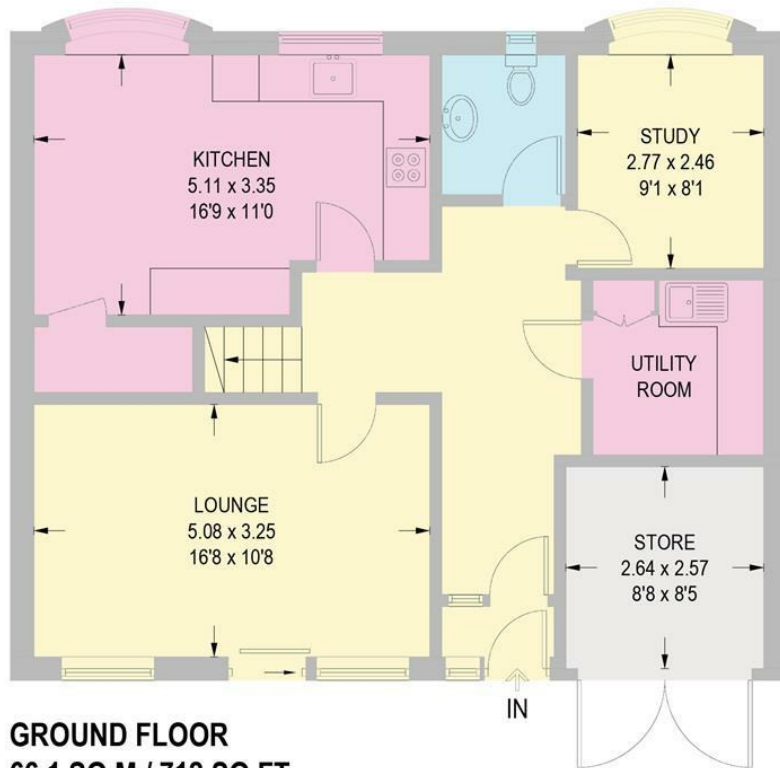


Illustration for identification purposes only.
 measurements are approximate, not to scale.

While we endeavour to make our sales particulars fair, accurate and reliable, they are only a general guide to the property and, accordingly, if there is any point, which is of particular importance to you, please contact the relevant office. The Agents have not tested any apparatus, equipment, fittings or services and so cannot verify they are in working order. The buyer is advised to obtain verification. Please note all the measurement details are approximate and should not be relied upon as exact. All plans, floor plans and maps are for guidance purposes only and are not to scale. Under no circumstances should they be relied upon as exact or for use in planning carpets and other such fixtures, fittings or furnishings. YOUR HOME IS AT RISK IF YOU DO NOT KEEP UP REPAYMENTS ON A MORTGAGE OR OTHER LOAN SECURED ON IT. 'A Life Assurance policy may be requested.' 'Written Quotations of credit terms available on request.'

Banner Cross
 T: 0114 268 3241
 E: bannercross@saxtonmee.co.uk
www.saxtonmee.co.uk

Dronfield
 T: 01246 290992
 E: dronfield@saxtonmee.co.uk

Hathersage
 T: 01433 650009
 E: hathersage@saxtonmee.co.uk

Bakewell
 T: 01629 815307
 E: bakewell@saxtonmee.co.uk

Matlock
 T: 01629 828250
 E: matlock@saxtonmee.co.uk

